



Keresley Link Road Keresley Parish Council briefing 27 January 2022

Purpose of Briefing

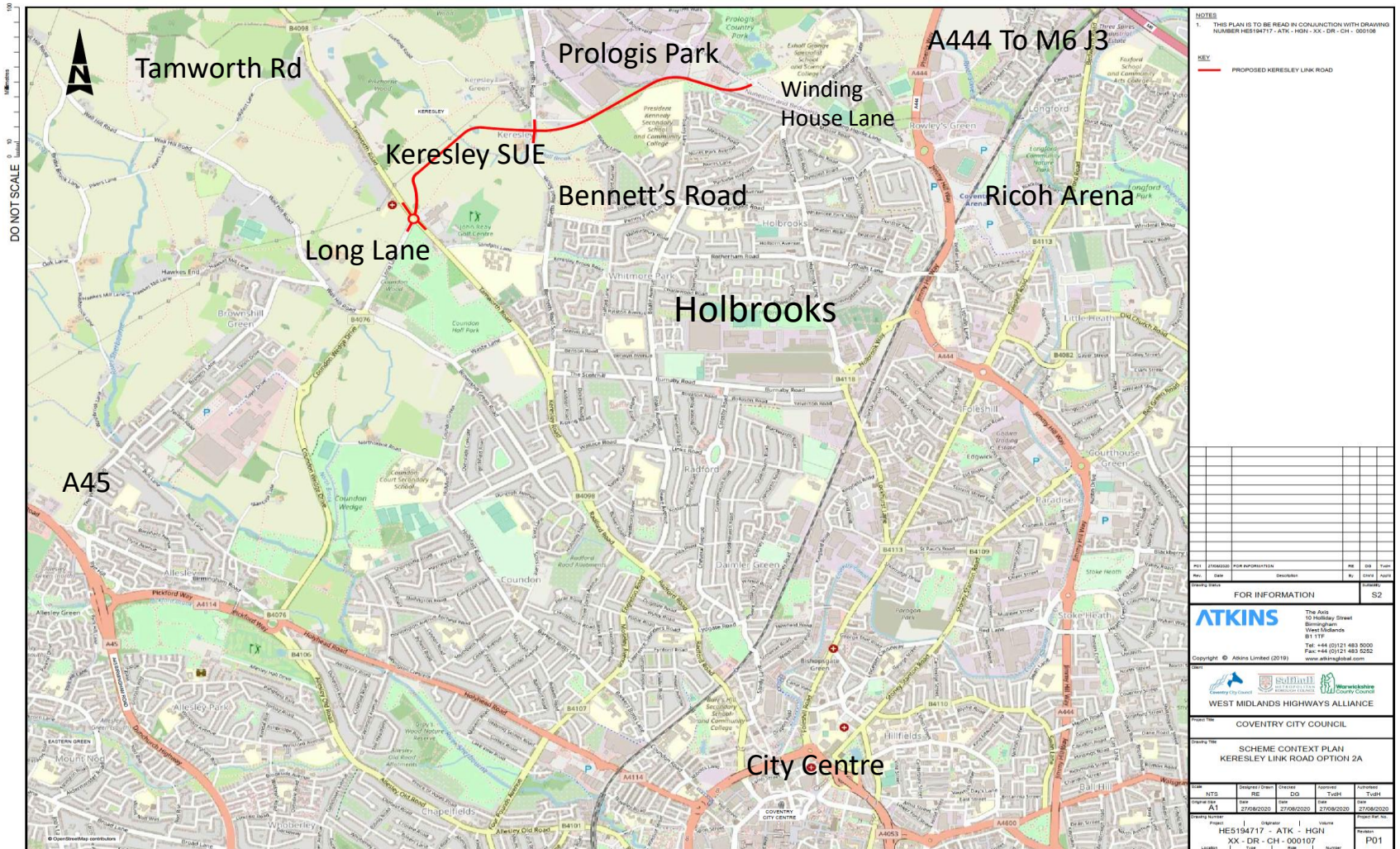
- To update Keresley Parish Council on the proposed Keresley Link Road



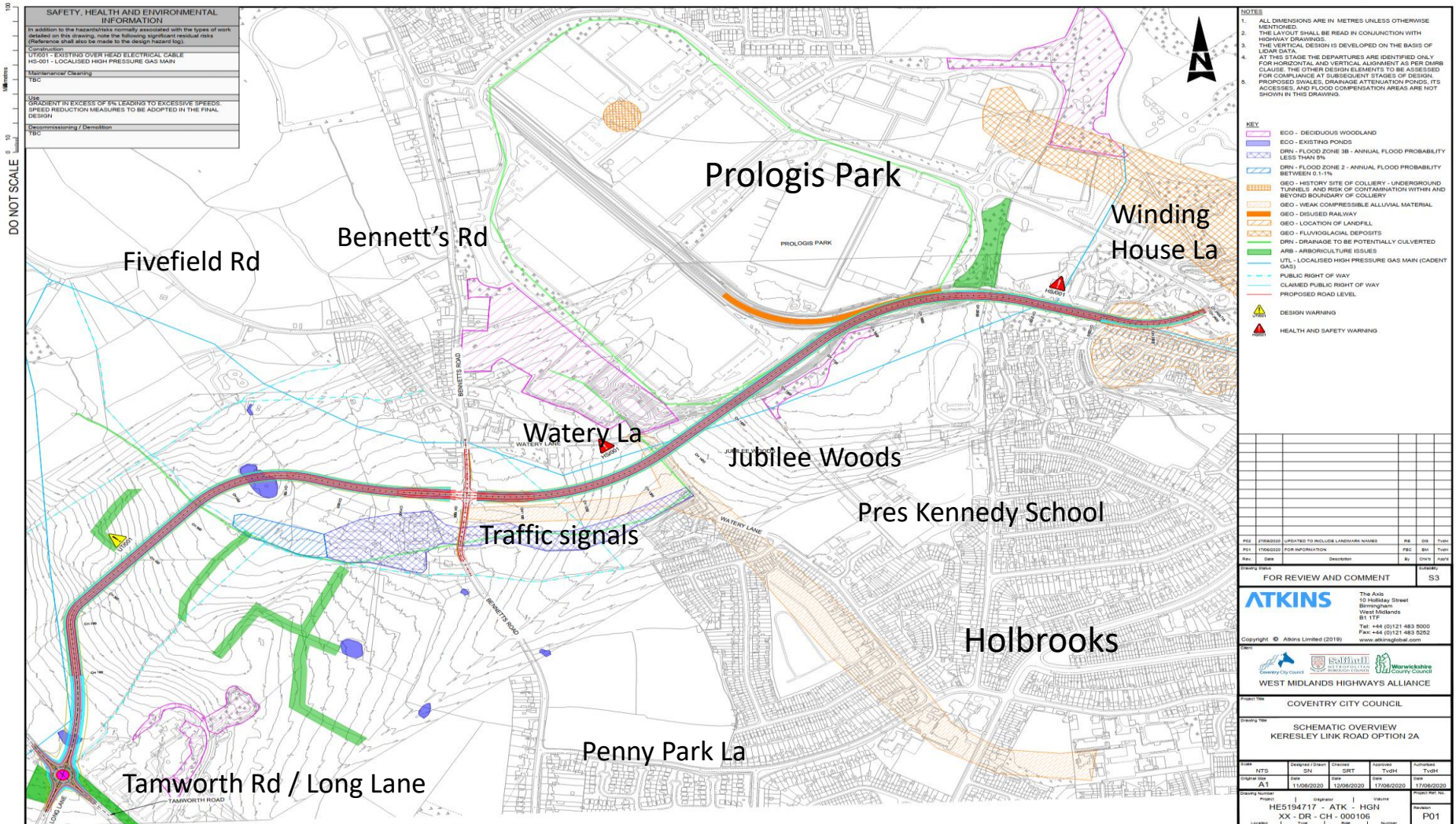
Policy background

- Coventry Local Plan (December 2017)
 - Keresley Sustainable Urban Extension
 - 3,100 homes, education facilities, 2 local centres,
 - Link Road between Winding House Lane and Long Lane – to be operational prior to full completion of development
 - Protection of Jubilee Woods
 - Prologis Park expansion
- Coventry North Transport Package (January 2017)
 - Keresley Link Road
 - M6 Junction 3 improvement

Keresley Link Road Context Plan



Keresley Link Road proposed route



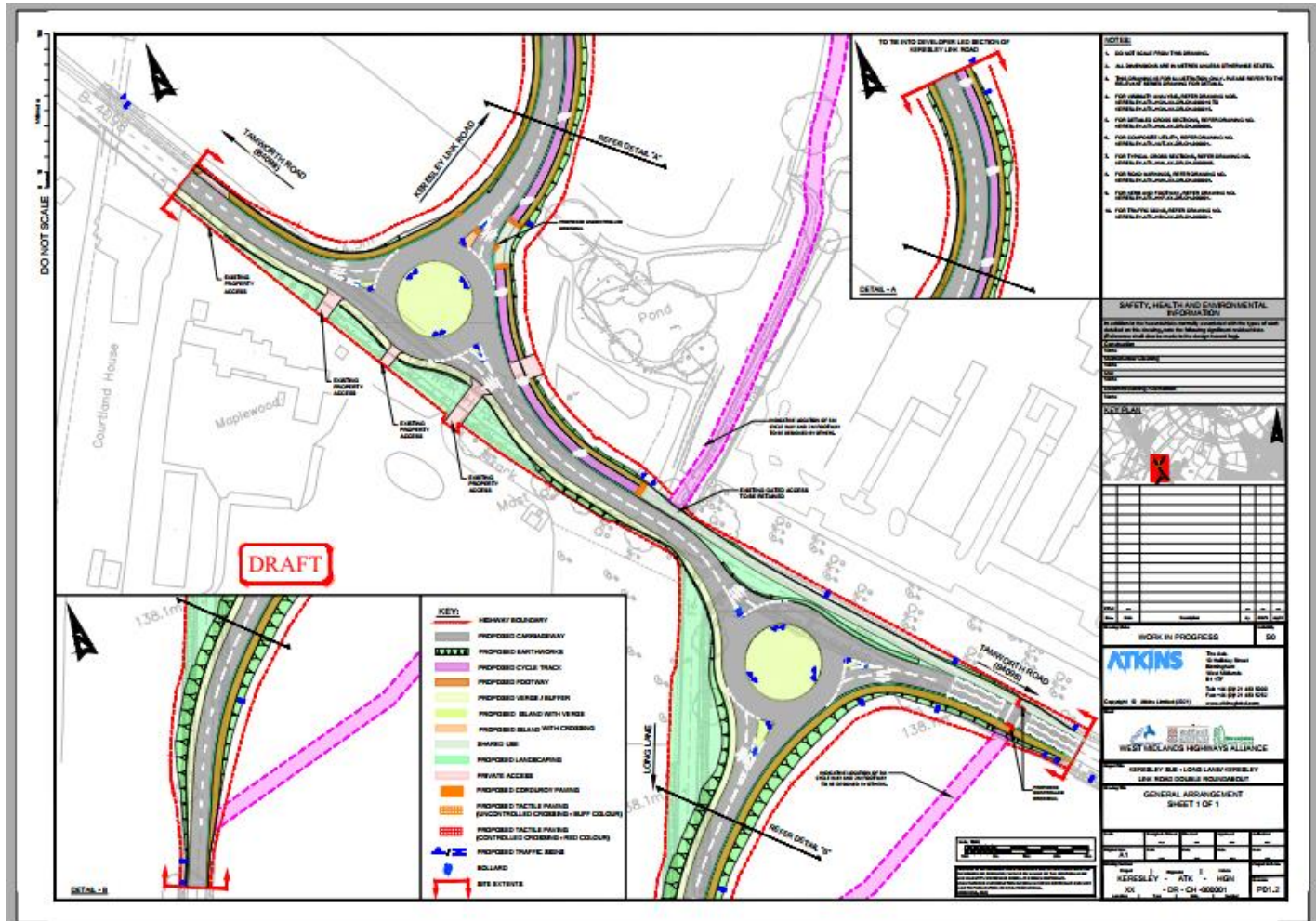
Scheme Standards

- Single Carriageway Road
- Fully segregated footway and cycleway along both sides of the road
- 30 mph speed limit
- Streetlighting
- Pedestrian crossings on desire lines – within development and at other locations such as Watery Lane
- Roundabout at Tamworth Road / Long Lane
- Signals at Link Road / Bennett's Road

Elements on site already



Elements on site already



Scheme Delivery

- Constraints
 - Impact on Jubilee Woods
 - Existing property especially around Watery Lane / Bennett's Rd
 - Need to accommodate Prologis Park
 - Removal of rail-freight line into Prologis Park
 - Need to incorporate alignment into development masterplan
- Delivery
 - CCC lead role in developing route in liaison with developers, WCC and NBBC
 - Cost estimate £15.8 million for full scheme
 - Funding – S106 (developers), but potential for advance funding
 - Developers to build sections of link road within their sites, CCC responsible for eastern section (Watery Lane to Winding House Lane)

Next Steps

- Confirm alignment as basis for discussion with Keresley SUE promoters and other stakeholders
- Develop detailed design and confirm scheme costs
- Prepare Outline Business Case to support funding bids
- Commence statutory processes (planning, railway line closure)
- Develop communications strategy setting out engagement process with key stakeholders, including local communities, developers, landowners and neighbouring local planning and highway authorities